

# BULLETIN

SUNDAY



## EGMO | 2012



*Chronophage*

### A Mathematical Tour

Saturday started with a relaxed brunch. In the afternoon, the guides led the contestants on tours of Cambridge, with special attention to notable mathematical highlights, including the Isaac Newton Institute and the Centre for Mathematical Sciences.



*Exploring Cambridge*

### An interview with Alexander, problem 3 coordinator:

*Was the coordination process as you expected?* No, actually, I expected it to be more confrontational, but actually it was all very cooperative and we just agreed most of the time.

*What has been the most interesting bit of EGMO so far?* Solving the problems and drawing up the markscheme.

*As a recent IMO contestant, how did you find being on the 'other side':* Not as much fun!



*Coordination in full swing*

### Results Published

Full results are available now. According to the marks distribution, contestants had the most success on question one, whereas questions four and eight were the most challenging.

#### Results online

For the problems, results and online copies of this bulletin visit

[www.egmo2012.org.uk/](http://www.egmo2012.org.uk/)

Official solutions will also be available there sometime next week.



*Coordination winding down*

## A Puzzle

Town A and town B are 30 miles apart. Three girls and a motorbike are at town A, and they want to travel to town B. Given that the bike can take either 1 or 2 riders, the bike has top speed 60 miles/hour while girl not on the bike has top speed 5 miles/hour. How long will it take for them all to reach town B?



*At Dan Schwarz's talk*

## The days ahead:

### Sunday

8:00 Breakfast

9:15 Get on coaches

Excursion to Bletchley Park

18:00 Return to MEC

19:00 Gala Dinner (dress code: lounge suits), Dome

### Monday

8:00 Breakfast

Departure

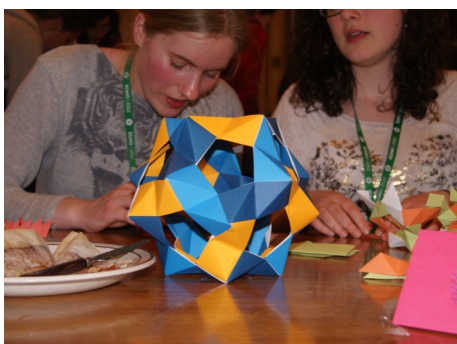
## Don't forget!

At the opening ceremony, Geoff Smith challenged all contestants to meet and talk to every single other contestant. Have you done this yet? EGMO 2012 is soon over, don't leave it too late! The Bletchley Park trip is an excellent time to take the time to meet anyone you have missed so far.



## Crafty...

Unwinding in the Dome, creating origami boxes, polyhedra and curved stitching cards.

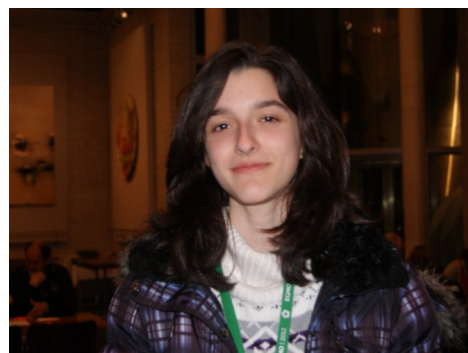


## Gala Dinner details

Sunday evening brings the gala dinner in the Dome. There will be placecards on the tables. You will be sat with the rest of your team and close to your guide. After the three-course dinner, there will be some speeches interspersed with the presentation of the medals.

The evening will culminate in the presentation of a trophy to the winning team.

Dress code is smart!



## Congratulations!

Many congratulations to EGMO 2012 joint highest scorers Danielle Wang (USA) and Pavlena Nenova (Bulgaria), who is pictured above.

